



# The Cornpicker

Bulletin of Fairbury, IL Rotary Club

*Fairburyrotary.com*



2010 - 2011 Officers

President . . . . . Charlie McDonald  
 Pres. Elect . . . . . Becky Whitfill  
 Vice President . . . . .  
 Sec/Treas/Editor . . . . . Leroy McPherson

**DATE/TIME/PLACE:** September 7, 2010 - 12:00 noon at Marchelloni's

**ATTENDANCE:** 17 plus Bob Bertche & Mary Ann Watkins

**LOTTO:** Jim Paternoster & Mary Ann Watkins

## **ACTION ON THE AVENUES**

### **CLUB SERVICE**

Programs:

- 9/14 - Steak Fry
- 9/21 and 9/28 - P.C.H.S.
- 10/5 - Corner Society (cancer)
- 10/12 - P.C.H.S.
- 10/19 - Jim Paternoster
- 10/26 - OPEN



#### **Steak Fry**

Sep. 14, 2010  
 Knoll Lodge at 6:30

Gary has the program. He said "*if you miss it, you will kick yourself*". Signup sheet has been passed. If you are coming, contact Leroy at 692-2223 and give him your name and that of your prospective member.

Membership: We received a thank you from District Govenor, Ray Ropp.

### **Bit's & Pieces**

If we are to truly awaken, we'll remember just how much our human species needs one another....Kathleen Brehony

### **AREA CLUB MEETINGS**

Bloomington	12:00 Noon	Thurs.	Elks Club
Gibson City	6:45 a.m.	Wed.	The Country Kettle
Gilman	6:05 p.m.	Tues.	Gilman Lounge
Lincoln	11:50 a.m.	Wed.	Elks Country Club
Normal	12:00 Noon	Wed.	Bone Student Center

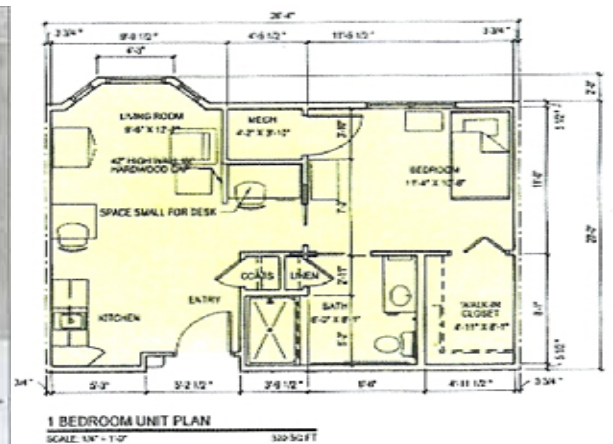
# The Communities at Mercy Creek



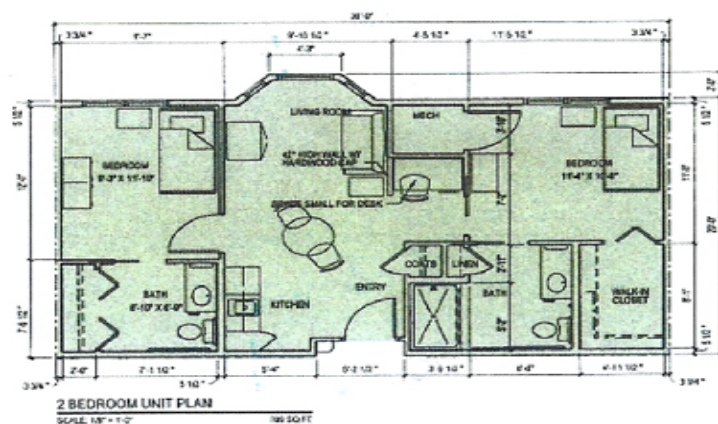
Meadows was established in 1923. They have 79 intermediate, 130 skilled care, and 29 sheltered care. There are 1200 nursing homes - 800 have medicare and medicaid. Of these, 90 are 5 star. Meadows was rated 14 star. Only 8 had a 14 star with one a 15. In 2010 they were rated one of the top 9 facilities.

Ten years ago Bloomington-Normal asked them to develop there. The current statement in the nursing home of tomorrow will be assisted living. Meadows is more a social residential model (supportive living). They have independent living, shelter care, intermediate, and skilled care, along with sup-

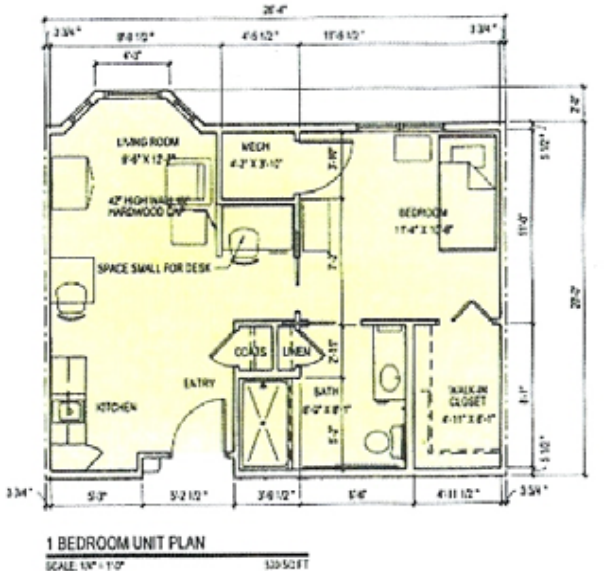
porting show bus. You cannot build a 10-20 unit and be efficient for assistant living. The Apostolic Church in Bloomington-Normal partnered with them and gave them 15 acres to develop The Communities At Mercy Creek. They will develop in 4 phases. One is the core building - large enough to handle the complete development. 2) 60 bed assistant living and 60 bed for supportive living (lower income). 3) a wellness 22 bed facility and Rehab. 4) Congregate living - independent living under one roof. They are building the core building with a \$3 million front load. Phase one will cost \$14,500,000. This will be a continuing care retirement community. You can flow from one area to the next. They have to build roads and get water and sewer installed. Financing has been a challenge with the economy. P.J. Hoerr Construction will be doing the design-build project. They hope to open July of 2012.



1 Bedroom Unit Plan - 520 square feet



2 Bedroom Unit Plan - 709 square feet



1 Bedroom Unit Plan - 520 square feet

# Save the Date

October 2, 2010

9:00 a.m. - 1:30 p.m.

Meadows Mennonite Retirement Community  
22nd Annual Fall Fest

Sponsored by Meadows Auxiliary in cooperation  
with the Development Department

## Fall Fest 2010 Schedule of Events

Live Auction preview 9:00 a.m. - 9:30 a.m.

Bake Sale 9:00 a.m.

Children's Activities 9:30 a.m. - 11:30 a.m. - Face painting  
and magic by FeeFee the Clown, Cake Walk,  
and pumpkin painting

Silent Auction 9:30 a.m. - 11:30 a.m.

Live Auction 9:30 a.m.

Pork Chop/Veggie Burger Dinner 11:30 a.m. - 1:30 p.m.  
Dinner Donation \$7.00 in advance/\$8.00 at the door

Entertainment 11:30 a.m. - 12:30 p.m. - Living Water  
12:30 p.m. - 1:30 p.m. - Gospelaire



**Meadows**  
Mennonite Retirement Community

Meadows Mennonite Retirement Community  
24588 Church St.  
Chenoa, IL 61726-9705

(309) 747-2702

[www.meadowshome.org](http://www.meadowshome.org)

“However many years anyone may  
live, let them enjoy them all...”

Ecclesiastes 11:8 TNIV