



The Cornpicker

Bulletin of Fairbury, IL Rotary Club

"Celebrate Rotary"

Fairburyrotary.com

2003 - 2004 Officers

President John Strong
 Pres. Elect Mike Petersen
 Vice President
 Sec/Treas Leroy McPherson
 Editor Leroy McPherson



DATE/TIME/ PLACE: January 25, 2004 - 12:00 Noon at McDonalds

ATTENDANCE: 27

SING-A-LONG: Wait Till The Sun Shines Nellie & America, The Beautiful

LOTTO:

ACTION ON THE AVENUES

CLUB SERVICE

Programs:

02-01 - Bob Nussbaum 02-15 - Rod Stevens
 02-08 - OPEN 02-22 - P.C.

Membership:



John ran the Huston Marathon in 3:15 for 26.2 miles.

He qualifies for the Boston Marathon.

Quips & Quotes

It is not what you have lost,
 but what you have left that counts.
 Harold Russell (1914-2002) Actor



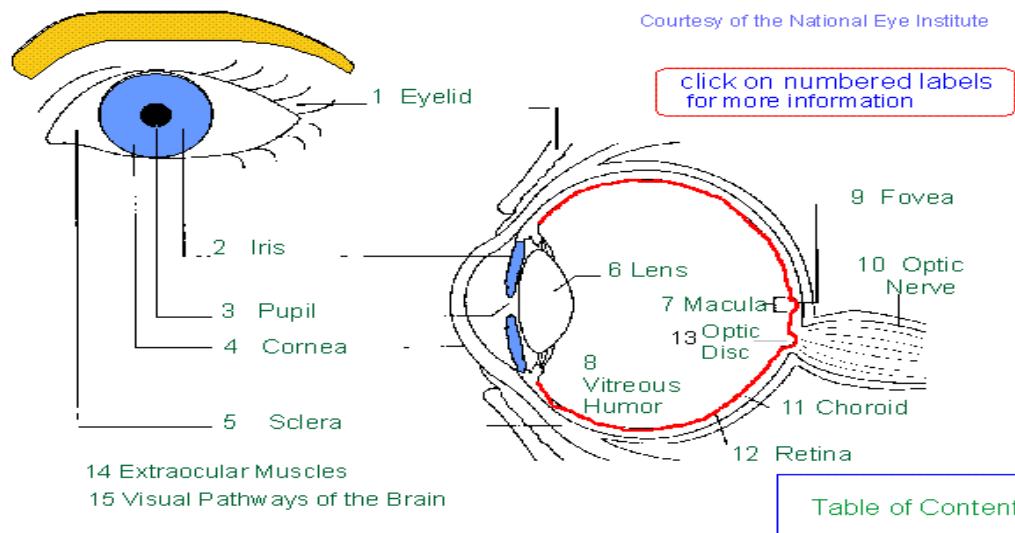
Happy Birthday

2/01 - Kent Robson
 2/05 - Rod Stevens
 2/24 - Phil Hermes

AREA CLUB MEETINGS

Bloomington	12:00 Noon	Thursday	Elks Club
Gibson City	6:45 a.m.	Wednesday	The Country Kettle
Gilman	6:05 p.m.	Tuesday	Gilman Lounge
Lincoln	11:50 a.m.	Wednesday	Elks Country Club
Normal	12:00 Noon	Wednesday	Bone Student Center
Piper City	6:15 p.m.	Monday	Azz Izz Tavern

Eye Care - Dr. Robin Coady



A normal eye is like a camera, light enters through the cornea. Behind this it goes through a clear lens and then 4 layers that are flexible and change shape. The retina is a layer of cells. The ciliary body changes the shape of the lens allowing light to nerve impulses. The choroid is the nerve of the eye. The center macula is the cone shaped of cells to nerves. Then the optic nerve. There is an angle flow of fluid to the trabeculas.

Cataracts - is the clouding of the lens of the eye. It is due to age, injury, etc. It blurs, dims and discolors vision. It is treated with surgery and replacement of your lens with a clear plastic one. They use an intraocular lens. Using an ultrasonic probe the lens is placed in a bag. They use laser to put a hole in the bag. They also laser the cataract as outpatient - in two days you are back to normal.

Glaucoma - is when the aqueous humor has a constant flow around the aliary body around the pupil is blocked and pressure

builds up. The "open-angle" fluid cannot drain. You get pressure damage to the optic nerve. It starts with a loss of side vision first. It can cause total blindness. Test for this is the air Puff and Slit Lamp. Treatment is the constant use of eye drops. Laser is used to treat along with surgery. Blindness can occur without regular checkups. High risk people are over 35, diabetic and African American.

Macular Degeneration - is central vision loss in the macular cone cells. Normally it is sharp and clear in the center. This distorts center vision making it blurry and wavy. It becomes difficult to read. There are two types. 1) dry; 2) wet - this form is not treatable. It is the loss of photoreceptor cells. Some laser treatment may be used or microsurgery and photodynamic therapy using a dye then laser. It is a slow damage that is not reversible. Over 60% loss and you are legally blind. There are some low vision aids being used. Just remember - the signs of blurry-wavy and difficulty in reading.

BITS & PIECES

I believe that somewhere between 35 and 45 people have a defining moment . . . that makes you rethink everything. You come out either embittered and a little smaller or you grow and say, "You know, I can't control everything, I'd better just enjoy the day in front of me." Hank Azaria, Actor